



## NetaTank™ - Netafim™ water tanks



NetaTank™ is a complete water tank system, available with all relevant components, including covers, liners, steels, enclosures and outlets.

All components are designed to work together to create a robust and reliable water tank system.

Netafim™ water tanks can address wide range of applications: fresh water, treated water, grey water, rainwater, recycled water and poor quality water.

### BENEFITS

- Complete water tank systems with all accessories
- Compact and therefore saves on transportation costs
- Quick and easy to install, with user-friendly installation manual and without any on-site fabrication (assembly only)
- Reliable system – reduces maintenance labor and cost with extended warranty:
  - Steel tank - 10 years graduated
  - Liners - 8 years graduated
- Modular design, to meet variety of requirements and tanks' sizes
- Fast on-site service, thanks to our extensive local and global support

### FEATURES

- Corrugated hot dip galvanized steel that ensures high corrosion resistance
- Unique liners with proven durability and resistance to wide range of temperatures.
- High resistance to low-quality/saline water (EC=7)
- Suitable for recycled water from greenhouses, water treatment facilities, fire extinguishing systems, etc.
- Resistance to chlorine (Cl) content of up to 4 ppm (other resistances to chlorine, by special order).
- High UV resistance (direct sunlight) when tank is uncovered.



## TYPICAL APPLICATIONS

- Agriculture - greenhouse and open field
- Livestock farming
- Pisciculture (fish farming)
- Rainwater harvesting
- Landscape irrigation
- Sports/Golf irrigation



## COMPONENTS

### ■ Tanks

Corrugated galvanized steel plates - Short panels, galvanization 450 Gr/m<sup>2</sup> (0.092 lb/ft<sup>2</sup>)  
(Epoxy powder-coated steel plates can be supplied by special order).

### ■ Liners

- E-610 - General purpose; Resistance to low temperature in storage down to -35°C (-31°F), Netafim™ I.B.; Color: Ice-blue.  
[E-610 VLT, Resistance to low temperature in storage down to -55°C (-67°F), can be supplied by special order]
- E-305-A - Potable water FDA approved; Color: Grey.

### Specifications

Test and method	E-610		E-305-A	
	Metric standard	US standard	Metric standard	US standard
Fabric type	PES 1100 Dtx	PES 1000 Den	PES 1100 Dtx	PES 1000 Den
Polymer	PVC			
Total weight ASTM D 751	610 gr/m <sup>2</sup>	18 oz/yd <sup>2</sup>	740 gr/m <sup>2</sup>	21.8 oz/yd <sup>2</sup>
Breaking strength (Strip) ASTM D 751 procedure B	250/230 Kg/5 cm	285/275 lbs/in	280/260 Kg/5 cm	308/286 lbs/in
Resistance to high temperature	35°C	95°F	35°C	95°F
Resistance to low temperature in water storage*	<-30°C	<-22°F	<-30°C	<-22°F
Tearing strength	128 kg	282 lb	128 kg	282 lb

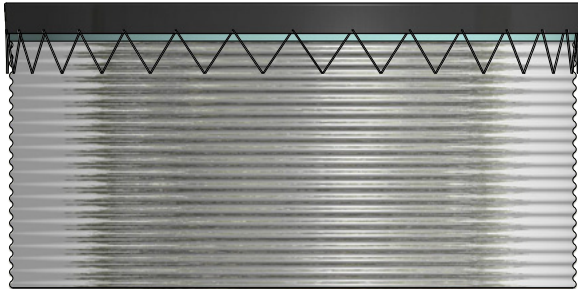
\*No water consumption during freeze conditions

### Features

- Resistance to low-quality/saline water (EC=7)
- Suitable for recycled water from greenhouses, water treatment systems, fire extinguishing systems, etc.
- Resistance to chlorine (Cl) content of up to 4 ppm (other resistances to chlorine, by special order)
- Resistance to UV from direct sunlight when tank is uncovered
- Warranty: 8 years, graduated
- Repairing option: by client, easily and reliably

## Covers

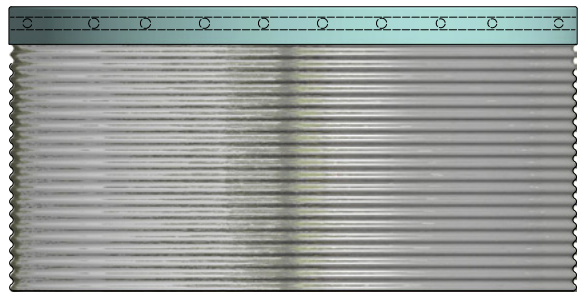
- Stretch cover  
(for tank diameter  $\leq 8.04$  m/26.38 ft)



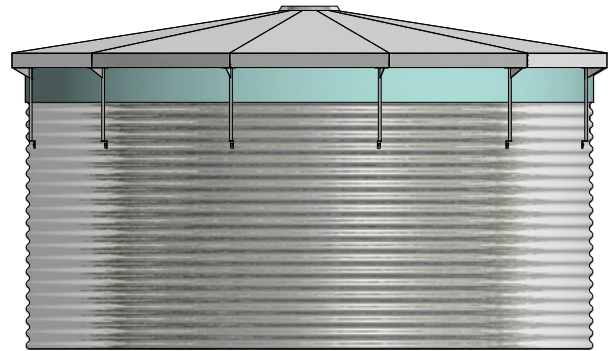
- Stretch cover with central post  
(for tank diameter  $\leq 12.73$  m/41.76 ft)



- Floating cover  
(for tank diameter  $> 10$  m/33 ft)



- Metal cover  
(for tank diameter  $\leq 13.72$  m/45 ft)



- Dome cover  
liner/net, with steel structure.  
(for tank diameter  $< 14.75$  m/48.4 ft)



## Water outlet

Water outlet located at the bottom of the water tank.

### 4 sizes are available\*

mm	in
32-75	1¼-2½
90-225	3-8
250-350	10-14
400-500	16-20

\*Other sizes of water outlet can be supplied by special order.  
can be supplied with as many water outlets as needed, by special order.

## Engineering and planning tools

- A configurator for simple, easy, tailor-made configuration of the desired product is available at <http://bit.ly/2gkiR8x>.
- Comprehensive installation manual for straightforward installation.

## ■ Water tank volume

■ Metric standard (m<sup>3</sup>)

Diameter (m)	Height (m)				
	1.55	2.31	3.07	3.83	4.56
2.68	9	13	17	22	26
3.35	14	20	27	34	41
4.02	20	29	39	49	58
4.69	27	40	53	66	79
5.36	35	52	69	87	104
6.03	44	66	88	109	131
6.70	55	81	108	135	162
7.37	66	98	131	164	196
8.04	79	117	156	195	233
8.71	92	138	183	228	274
9.38	107	160	212	265	318
10.05	123	183	244	304	364
10.72	140	208	277	346	415
11.39	158	235	313	390	468
12.06	177	264	351	438	525
12.73	197	294	391	488	580
13.40	218	325	433	540	648
14.07	240	359	477	596	714
14.74	264	394	524	654	784
15.41	288	430	573	715	857
16.08	314	469	623	778	933
16.75	341	509	677	844	1,012
17.42	369	550	732	913	
18.09	397	593	789	985	
18.76	427	638	849	1,059	
19.43	458	684	910	1,136	
20.10	491	732	974	1,216	
20.77	524	782	1,040		
21.44	558	833	1,108		
22.11	594	886	1,179		
22.78	630	941	1,251		
23.45	668	997	1,326		
24.12	706	1,054	1,403		
24.79	746	1,114	1,482		
25.46	787	1,175			
26.13	829	1,237			
26.80	872	1,302			
27.47	916	1,368			
28.14	962	1,435			
28.81	1,008	1,504			
29.48	1,055	1,575			
30.15	1,104	1,647			
30.82	1,156	1,723			
31.49	1,207	1,799			
32.16	1,259	1,876			
32.83	1,312	1,955			

■ US standard (USG)

Diameter (ft)	Height (ft)				
	5.09	7.58	10.07	12.57	14.96
8.80	2,378	3,434	4,491	5,812	6,868
11.00	3,698	5,283	7,133	8,982	10,831
13.19	5,283	7,661	10,303	12,944	15,322
15.39	7,133	10,567	14,001	17,435	20,870
17.59	9,246	13,737	18,228	22,983	27,474
19.78	11,624	17,435	23,247	28,795	34,607
21.98	14,529	21,398	28,531	35,663	42,796
24.18	17,435	25,889	34,607	43,324	51,778
26.38	20,870	30,908	41,211	51,514	61,552
28.58	24,304	36,456	48,343	60,231	72,383
30.77	28,266	42,268	56,004	70,006	84,007
32.97	32,493	48,343	64,458	80,308	96,159
35.17	36,984	54,948	73,176	91,404	109,631
37.37	41,739	62,080	82,686	103,027	123,632
39.57	46,758	69,741	92,724	127,595	138,690
41.77	52,042	77,667	103,291	128,916	153,220
43.96	57,590	85,856	114,386	142,653	171,183
46.16	63,401	94,838	126,010	157,446	188,619
48.36	69,741	104,084	138,426	172,768	207,119
50.56	76,082	113,594	151,371	188,883	226,395
52.76	82,950	123,897	164,579	205,526	246,472
54.95	90,083	134,464	178,844	222,961	267,342
57.15	97,479	145,295	193,374	241,189	
59.35	104,876	156,654	208,432	260,209	
61.55	112,801	168,542	224,282	279,758	
63.75	120,991	180,694	240,397	300,099	
65.94	129,708	193,374	257,304	321,233	
68.14	138,426	206,582	274,739		
70.34	147,408	220,055	292,703		
72.54	156,918	234,056	311,459		
74.74	166,428	248,586	330,479		
76.94	176,467	263,379	350,292		
79.13	186,505	278,437	370,633		
81.33	197,072	294,288	391,503		
83.53	207,903	310,402			
85.73	218,999	326,781			
87.93	230,358	343,952			
90.12	241,982	361,387			
92.32	254,133	379,087			
94.52	266,285	397,315			
96.72	278,701	416,071			
98.92	291,646	435,091			
101.12	305,383	455,168			
103.31	318,856	475,245			
105.51	332,593	495,587			
107.71	516,456	516,456			